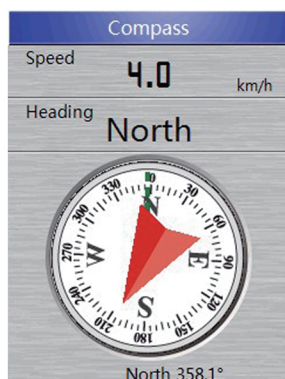
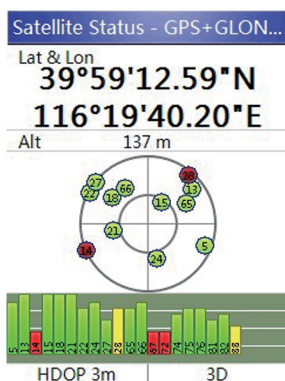




### KEY FEATURES

- **High sensitivity handheld GPS**  
**GPS & GLONASS**
- **Portable & Rugged**
- **4 GB internal memory**
- **2.2" QVGA, 65K color, sunlight-readable screen**
- **Barometric altimeter, 3-axis E-compass, Thermometer**
- **Outdoor navigation**
- **GPX, SHP, MIF, CSV, KML, DXF, TXT data formats supported**



### See the Way

NAVA<sup>®</sup> F30/F60 has an enhanced 2.2", 65K color, 240x320 pixels sunlight-readable display. Durable, portable and waterproof, NAVA<sup>®</sup> F60 adds a built-in 3-axis electronic compass, which shows your heading even when you're standing still, without holding it level. Also added is a barometric altimeter.

### Excellent GPS & GLONASS Performance

NAVA<sup>®</sup> F30/F60 supports not only GPS but also GLONASS, with its high-sensitivity, WAAS, EGNOS, MSAS, GAGAN-enabled GPS receiver, NAVA<sup>®</sup> F30/F60 locates your position quickly and precisely and maintains its location even in heavy cover and deep canyons.

### Multi-purpose Handheld GPS

NAVA<sup>®</sup> F30/F60 is an ideal rugged GPS & GLONASS receiver for a large range of applications from Agriculture, Forest and Biology, Mining, Surveying, Outdoor, Nautical, Hydrographic studies, Engineering disciplines, Geographical (GIS) and Urban information systems, Municipalities and Public works directorates, Electricity Electronics, Geological studies, Sporting, National Real Estate -land survey directorates, Remote sensing, Public sector and institutions, Planning and First draft projects...

### Add Maps

Worldwide basemap preloaded, and NAVA<sup>®</sup> F30/F60 also supports City detail map, DEM map, and Raster map.

### Multiple GPS Data Formats to Share

NAVA<sup>®</sup> F30/F60 lets you manage and export & import your waypoints, tracks and routes in multiple GPS data formats, including GPX, SHP, MIF, CSV, KML, DXF, and TXT via NAVA GPS Office software.



## Technical Specifications

### Physical & Performance

- Unit dimensions, WxHxD: 5.7x12.9x2.8cm (with 2xAA battery)  
WxHxD: 5.7x12.9x2.2cm (with Lithium battery)
- Display resolution, WxH: 240×320 pixels, QVGA
- Display size: 2.2"
- Display type: Transflective TFT, 65K colors
- Weight: 113g (without battery)
- Battery: 2xAA; Lithium battery
- Battery life: 2xAA (up to 15 hours);  
Lithium battery (up to 20 hours)
- Waterproof: IPX7
- High-sensitivity receiver: Yes (56 parallel channels)
- Interface: USB and NMEA 0183 compatible

### Maps & Memory:

- Basemap: Preload worldwide basemap
- Ability to add maps: Yes
- RAM: 128 MB
- Flash Storage: 4 GB
- Accepts data cards: Yes (microSD™ card 32G)
- Waypoints / favorites / locations: 3000
- Routes: 200
- Track log: 100 saved tracks, 10000 points

### GPS performance:

- GPS accuracy: 3-7m (GPS and GLONASS);  
1-3m (GPS with WASS, EGNOS, MSAS, GAGAN) <sup>(1)</sup>

(1) Accuracy and reliability specifications may be affected by multi path, satellite geometry and atmospheric conditions. Performances assume minimum of 5 satellites, follow up of recommended general GPS practices. SBAS (Satellite Based Augmentation System). Includes WAAS (Wide Area Augmentation System) available in North America only, EGNOS (European Geostationary Navigation Overlay System) available in Europe only, MSAS available in Japan only, and GAGAN available in India only.

Specifications subject to change without notice.



### Features:

- Automatic routing: Yes (with optional mapping for detailed roads)
- Electronic compass: Yes (NAVA F60 only)
- Barometric altimeter: Yes (NAVA F60 only)
- Geocaching-friendly: Yes
- Custom maps compatible: Yes
- Outdoor GPS games: Yes
- Hunt / fish calendar: Yes
- Sun and moon information: Yes
- Area calculation: Area and perimeter calculation
- Custom POIs : Yes
- Google data compatible: Yes
- AVG: Yes
- Calculator: Yes
- Thermometer: Yes (NAVA F60 only)

### Package content

- NAVA F30 / F60 GPS device
- User Manual
- Lanyard
- USB Cable
- CD

### Optional accessories

- Lithium battery
- AC / Vehicle power adapter
- Vehicle charger
- USB cable
- Micro SD card
- Carrying case

## BHC Navigation Co., Ltd.

(GMT +08:00, 39°59'12.68" N 116°19'39.16" E)

Add: 7th Floor, Tower C, Intelli-Center, No. 18 Zhongguancun East Road,  
Haidian District, Beijing, 100083, China

Tel: +86 10 5126 6697

Fax: +86 10 8260 0298

Email: sales@bhcnavigation.com

[www.BHCnav.com](http://www.BHCnav.com)

**BHCNAV AUTHORIZED DISTRIBUTION PARTNER**